

Sauterneslaan 35 D

6213 EP Maastricht (Campagne)

For Rent



Vraagprijs € 885 p.m. ex.



MIJN HUIS EN IK  
MAKELAARS

Interested in this house? Call us for a viewing **043 - 851 25 25** or mail [info@mijnhuisenik.com](mailto:info@mijnhuisenik.com)

Price	€ 885 p.m. ex.
Service charges	€ 140
Status	Rented
Acceptance	directly
Apartment type	Walk-up flat
Build type	Existing
Build year	1979
Maintenance inside	Excellent
Maintenance outside	Excellent
Living surface	66m <sup>2</sup>
Other surface	7m <sup>2</sup>
Volume	225m <sup>3</sup>
Rooms	3
Bedrooms	2
Floors	1

Interested in this house? Call us for a viewing **043 - 851 25 25** or mail [info@mijnhuisenik.com](mailto:info@mijnhuisenik.com)

### MAASTRICHT - 2 BEDROOM APARTMENT - STUDENTS NOT ALLOWED

This neat apartment on the 3rd floor is located within cycling distance of the city center in the popular Campagne district. The apartment is approx. 66 m<sup>2</sup> excluding the private storage room and has 2 bedrooms, a spacious living room with open luxury kitchen and a practical modern bathroom. The apartment is accessible by elevator.

#### LAYOUT

##### Basement

Private storage room of approx. 4 m<sup>2</sup>.

##### Ground floor

Central reception hall with doorbells, mailboxes and access to the stairwell and elevator.

##### 1st floor

Entrance / hall with access to all areas.

Living room with open luxury kitchen (total approx. 31 m<sup>2</sup>) and access to the balcony on the north. The kitchen is situated in high-gloss white as a corner unit with all appliances.

Two bedrooms of 12 m<sup>2</sup> and 9 m<sup>2</sup> respectively. Toilet room with standing toilet and wash basin.

Storage room of approx. 7 m<sup>2</sup>. Bathroom of approx. 4 m<sup>2</sup> with shower, sink and washing machine connection.

#### PARTICULARITIES

Good location and accessibility.

The apartment has double glazing.

Parking: free parking near the complex

#### CHARACTERISTICS

Rent: € 885, -

Heating costs: € 90.00

Service costs: € 50.00 including water consumption

Total rent per month: € 1,025.00 excl. Electricity and gas for cooking

Deposit: € 1,500.00

This information has been compiled with the necessary care by 'my house and I' Brokerage together with the owner.

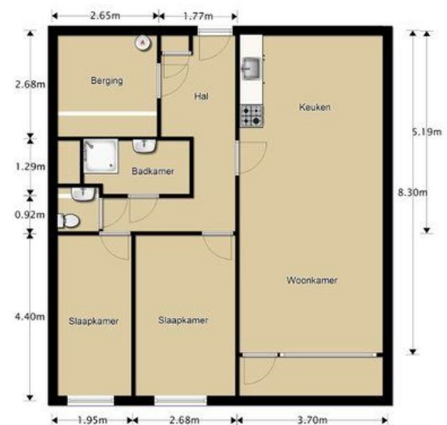
On our part, no liability is accepted for any incompleteness or inaccuracy, or the consequences thereof.

All specified sizes and surfaces are indicative and no rights can be derived from this. When renting accommodation, we charge 150 euros to the tenants for carrying out a check and drawing up the lease.

Interested in this house? Call us for a viewing **043 - 851 25 25** or mail [info@mijnhuisenik.com](mailto:info@mijnhuisenik.com)



Interested in this house? Call us for a viewing **043 - 851 25 25** or mail [info@mijnhuisenik.com](mailto:info@mijnhuisenik.com)



Interested in this house? Call us for a viewing **043 - 851 25 25** or mail [info@mijnhuisenik.com](mailto:info@mijnhuisenik.com)