

Koperslagersdreef 29 C

6216 SN Maastricht (Belfort)

For Rent



Vraagprijs € 875 p.m. ex.



MIJN HUIS EN IK
MAKELAARS

Interested in this house? Call us for a viewing **043 - 851 25 25** or mail info@mijnhuisenik.com

Price	€ 875 p.m. ex.
Status	Rented
Acceptance	directly
Apartment type	Walk-up flat
Build type	Existing
Build year	1967
Living surface	80m ²
Volume	240m ³
Rooms	4
Bedrooms	2
Floors	1

Interested in this house? Call us for a viewing **043 - 851 25 25** or mail info@mijnhuisenik.com

MAASTRICHT - APARTMENT- BELFORT

Renovated apartment, close to shopping center (50 meters) and public transport. Cycling distance to city center and university maximum 10 minutes (1.5 km).

LAYOUT

Ground floor

central hall, bells plateau, letterboxes, staircase and private storage room for placing bicycles.

3th floor

hall / entrance, kitchen approx. 9 m² including gas hob, extractor and fridge; utility room with washing machine connection, new bathroom with shower, luxury vanity unit with lighting and mirror; separate new toilet; room 1: 20 m², divided into two rooms (3.90 x 2.30 and 3.90 x 2.80); room 2: 17 m² (4.50 x 3.70) and room 3: 18 m² (5.10 x 3.70).

Particularities:

- apartment is fully equipped with plastic frames with double glazing;
- apartment has been renovated and equipped with new kitchen, bathroom, toilet, laminate floor;
- two (2) neat students allowed

CHARACTERISTICS

Location of the house: in the Belfort district, about 1.5 km from the center

Type of home: apartment

Living area: 80 m²

Outdoor space: balcony at the front and back

Floors: laminate

Parking: free in front of the door

Rental price: € 875.00

Service costs: € 50.00 incl. Water consumption and rental of geyser

Fixed heating costs: € 100.00

Total rent: € 1,025.00 excluding electricity and gas for cooking

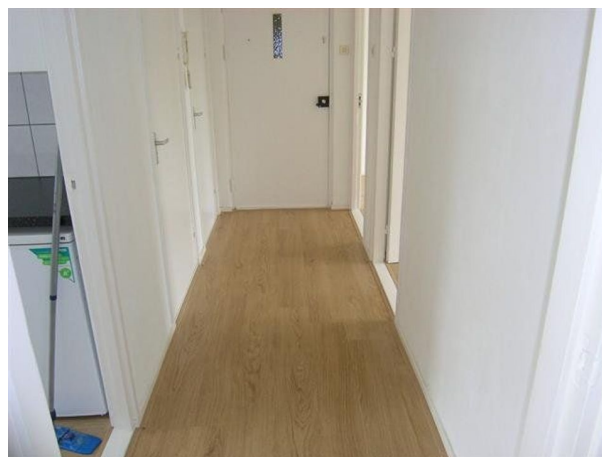
Deposit: € 1,500.00

This information has been compiled with the necessary care by 'mijn huis en ik' real estate agency together with the owner.

On our part, no liability is accepted for any incompleteness or inaccuracy, or the consequences thereof. All specified sizes and surfaces are indicative and no rights can be derived from this.

When renting accommodation, we charge the tenants 150 euros for carrying out a tenant check and drawing up the lease.

Interested in this house? Call us for a viewing **043 - 851 25 25** or mail info@mijnhuisenik.com



Interested in this house? Call us for a viewing **043 - 851 25 25** or mail info@mijnhuisenik.com

Koperslagersdreef 29 C

6216 SN Maastricht (Belfort)

Photos



Interested in this house? Call us for a viewing **043 - 851 25 25** or mail info@mijnhuisenik.com



Interested in this house? Call us for a viewing **043 - 851 25 25** or mail info@mijnhuisenik.com